



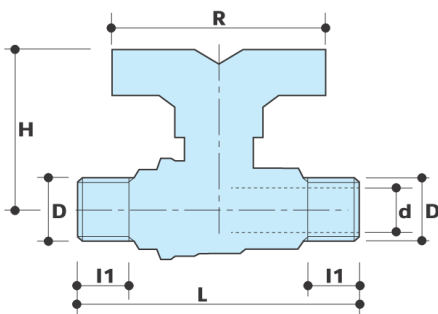
DESCRIPTION

52CE/2

M x M extra compact fullway ball valve.
Red butterfly handle.

Conform to EN 13828

DIMENSIONS



D	1/2"	3/4"	1"
d	15	20	25
H	46	55.5	56
l1	12	13	14
L	56	67.5	76.5
R	58	65	65
Accessory type	1	2	2
Weight (g)	170	285	430

All threads are conform to ISO 7/1 or ISO 228 standards

MATERIALS

- Body** CW617N (DIN 50930 part.6) CuZn40Pb2
- Ball** CW617N (DIN 50930 part.6) CuZn40Pb2
Chrome plated
- Stem** CW614N (DIN 50930 part.6) CuZn39Pb3
- Gland** CW614N (DIN 50930 part.6) CuZn39Pb3
- Seat** 2 x PTFE
- O-rings** 2 x FKM
- Lever** Aluminum butterfly handle

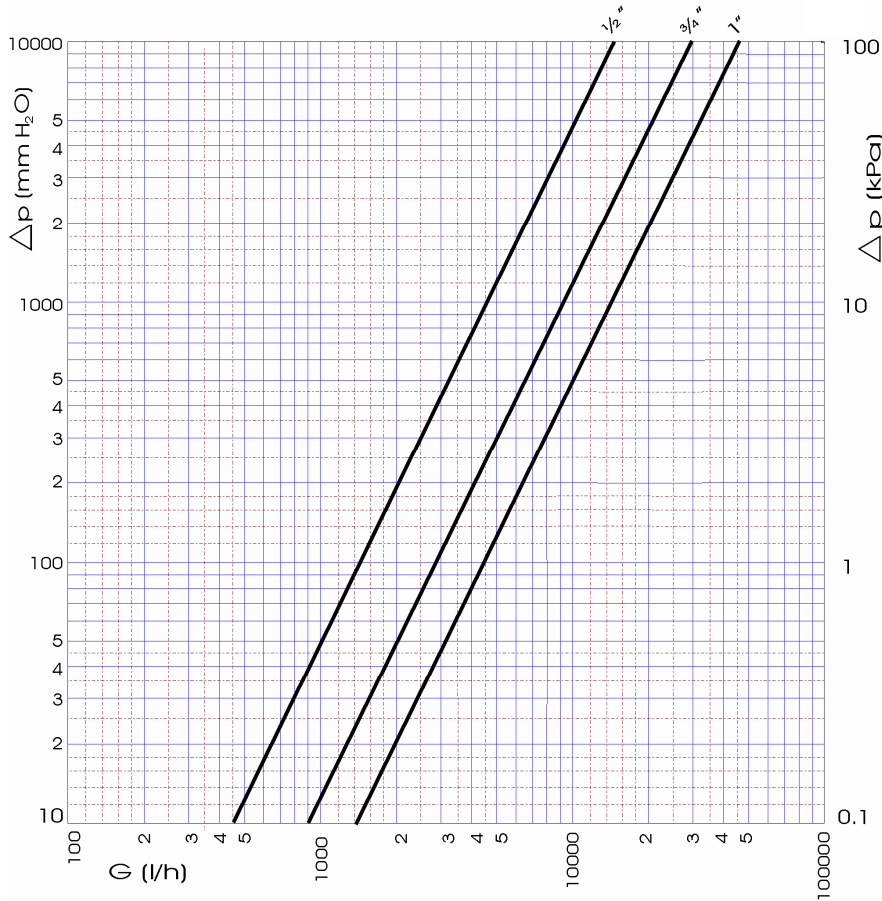
CONNECTION VARIANTS

- 52CE F X F, red butterfly handle
- 52CE/1 F X M, red butterfly handle
- 52CE/2 M X M, red butterfly handle

HANDLE VARIANTS

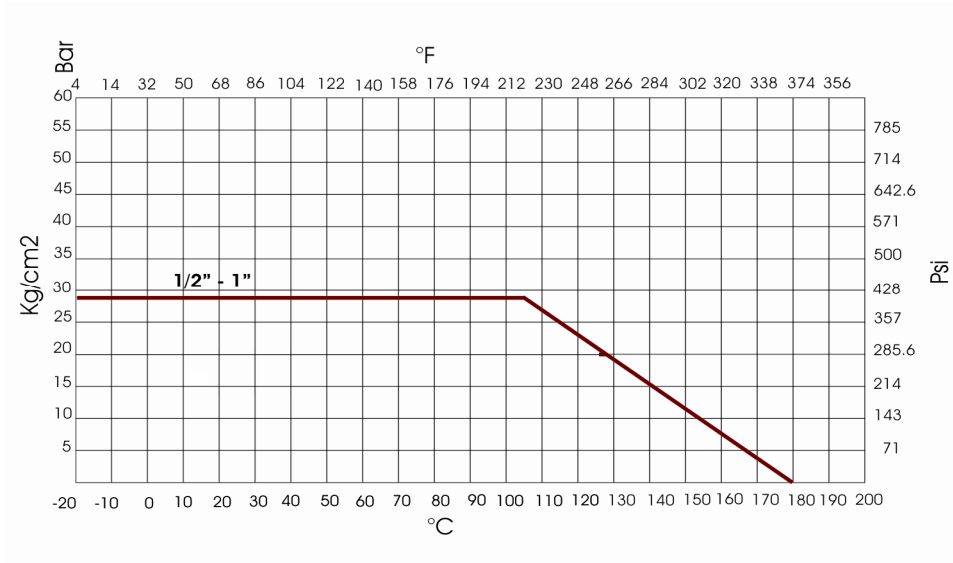
- 50CE red aluminum lever
- 51CE red steel lever
- 52CE red butterfly handle
- 52CET extended plastic lever

PRESSURE DROP DIAGRAM



Dim.	1/2"	3/4"	1"
Kv	14.5	30	45
PN	28	28	28

RECOMMENDED WORKING TEMPERATURE/ PRESSURE LIMIT



28 bar - 100 °C - non shock (1/2" - 1")
10 bar - 150 °C - non shock
 -20°C: lower temperature limit with 50% glycol. No frost.

STEC0014 R - - 30/08/2010