



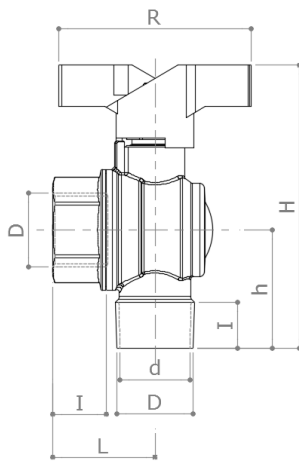
DESCRIPTION

59/1

F x M heavy duty full-flow angle ballvalve.
Red butterfly handle.

Conform to **EN 13828**

DIMENSIONS



| D | 1/2" | 3/4" | 1" |
|-------------------|-------------|-------------|-----------|
| d | 15 | 20 | 25 |
| H | 83 | 94 | 114 |
| h | 36 | 40 | 50 |
| I | 17 | 18 | 21.5 |
| L | 31 | 35 | 42 |
| R | 58 | 65 | 75 |
| Weight [g] | 200 | 300 | 580 |

Dimensions in **mm**

All threads are conform to ISO 7 or ISO 228 standards

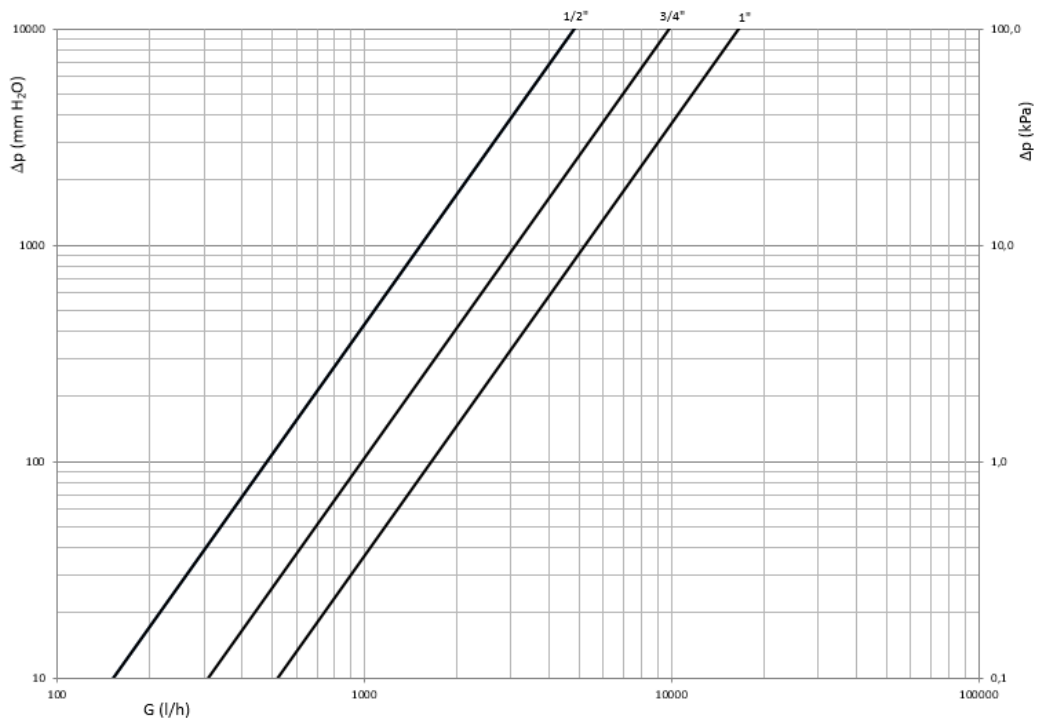
MATERIALS

- Body** CW617N (EN 12165) CuZn40Pb2
- Ball** CW617N (EN 12165) CuZn40Pb2 Chrome plated
- Stem** CW614N (EN 12164) CuZn39Pb3
- Stuffing box** CW614N (EN 12164) CuZn39Pb3
- Seat** 2 x PTFE + 1 x PTFE seal on the stem
- O-Rings** 2 x FKM
- Handle** Aluminum

RECOMMENDED WORKING TEMPERATURE/PRESSURE LIMITS

- 16 bar – 100°C – non shock
- 10 bar – 150°C – non shock

PRESSURE DROP DIAGRAM



| Dim. | 1/2" | 3/4" | 1" |
|------|------|------|------|
| Kv | 4.8 | 9.8 | 16.5 |
| PN | 16 | 16 | 16 |