



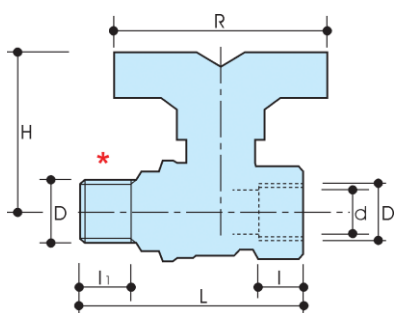
BESKRIVELSE

G52/1

Kraftig gaskuglehane med fuldt gennembløb.
Muffe x nippel. Gult T-greb.

I henhold til EN 331 standard.

DIMENSIONER



Dim	1/4"	3/8"	1/2"	3/4"	1"	1 1/4"
d	10	10	15	20	25	32
H	43	43	46	55.5	65	71
I	11.5	12	17	18	21.5	23.5
I1	11.5	12	17	18	21.5	23.5
L	56	57.5	70	79	93.5	106
R	58	58	58	65	75	75
Acc. Type	1	1	1	2	3	3
PN	8	8	8	8	8	8
Weight (g)	150	140	220	350	650	970

Alle gevind er i overensstemmelse med ISO 7 eller ISO 228 standarder.

* Flexibel rørforbindelse til UNI C.I.G. 9891

MATERIALER

Ventilhus	Messing CW617N (DIN 50930 part.6) CuZn40Pb2
Kugle	Messing CW617N (DIN 50930 part.6) CuZn40Pb2 Krombelagt.
Spindel	Messing CW614N (DIN 50930 part.6) CuZn39Pb3
Pakdåse	Messing CW614N (DIN 50930 part.6) CuZn39Pb3
Pakninger	2 x PTFE
O-ringe	2 x NBR - PTFE
Greb	Gult T-greb

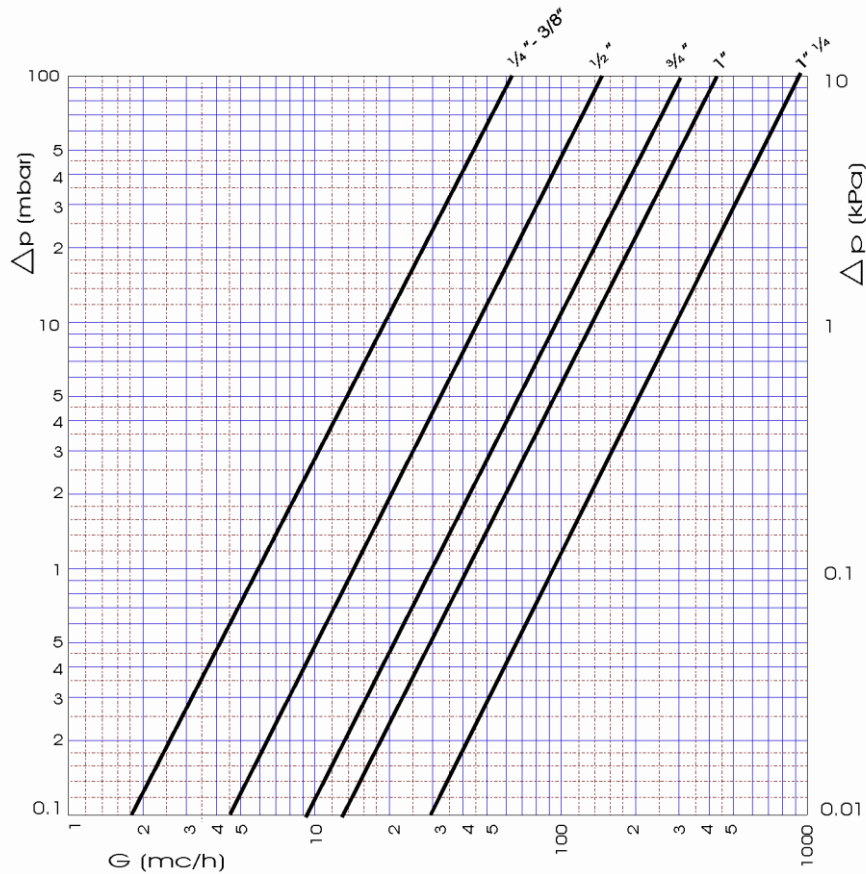
VARIANTER

G52	M x M, gult T-greb
G52/1	M x N, gult T-greb

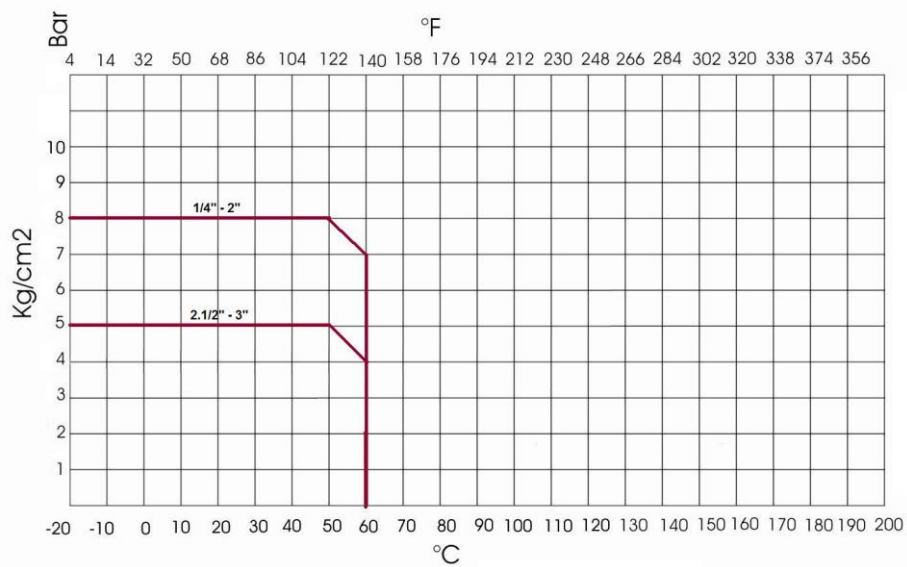
GREBSVARIANTER

G50	Gult aluminiumsgreb
G51	Gult stålgreb
G52	Gult T-greb

TRYKTABSDIAGRAM



ANBEFALET DRIFTSTEMPERATUR / MAKSIMALTRYK



Driftstemperatur - vidde: -20 + 60°C